

Windows How-To

- Collecting System Specifications in Windows
- How to Unpair a Bluetooth Device on Windows 10 PC
- How to Restart Video Graphics Driver of Display Adapter in Windows 8 and Windows 10
- Change Default Sound Input Device from Settings
- How to Open Settings in Windows 10
- How to Restart the Computer in Windows 10
- How to Open Win+X Quick Link Menu in Windows 10
- How to Open Windows PowerShell in Windows 10
- How to Open a Command Prompt in Windows 10
- How to Add or Remove 'Open PowerShell window here' context menu in Windows 10
- How to Open and Use All apps in Windows 10 Start menu
- How to open a reverse tunnel through a Windows PC to access the LAN
- How to Change Computer Sleep
- Contract Testing
- How to Get the Phone IP
- Set Up Unifi
- Remove / Forgetting a WIFI Profile

Collecting System Specifications in Windows

OPTION ONE

Using the System Information (msinfo32) within Windows

Note not **Note** or type unknown

To view the entirety of the msinfo32 command, view the Microsoft TechNet documentation here: [Microsoft TechNet Msinfo32](#)

1. Press the **Windows + R** keys at the same time to open the Run dialog box.
2. In the popup box, type **msinfo32** and select **Ok** or hit enter on the keyboard.

Collecting System Specifications in Windows-msinfo321.png

Note not **Note** or type unknown

Windows should now be displaying the System Information for this system. The left hand pane contains categories that will display additional information about the current system.

Collecting System Specifications in Windows-msinfo322.png

3. To save this information, select the **File** option followed by the **Save** option.

Tip **Tip** You can also choose to **Export** from this File menu to generate a text document instead.

Collecting System Specifications in Windows-msinfo323.png

4. When prompted for a save location, choose an appropriate save location.

OPTION TWO

Using the DirectX Diagnostic Tool

1. Press the **Windows + R** keys at the same time to open the Run dialog box.
2. In the popup box, type **dxdiag** and select **Ok** or hit enter on the keyboard. If prompted about digital signatures, select **Yes**

Collecting System Specifications in Windows-dxdiag1.png

Note not Note or type unknown

Windows should now be displaying the DirectX Diagnostic Tool for this system. Tabs located at the top of the window categorize the information.

Collecting System Specifications in Windows-dxdiag2.png

3. To save this information, click the **Save All Information** button towards the bottom of the window.

Collecting System Specifications in Windows-dxdiag3.png

4. When prompted for a save location, choose an appropriate save location.

OPTION THREE

Generating a Speccy Report

information found or type unknown

Speccy is a third-party application that is managed by Piriform; an Avast company. The application is a user friendly, yet powerful hardware information collector that has easy exporting options for forums and to share hardware information.

warning found Warning known

Speccy is a free application and is bundled with, what can be considered, computer bloatware. During the installation of Speccy, ensure to untick and/or decline to any unwanted software.

1. Download the free version of Speccy using the official download page.
2. Once downloaded, open the installer and select to **not** install CCleaner at the bottom. Next, select the **Customize** option underneath the Install button.

Collecting System Specifications in Windows-speccy1.png

3. Opt in or out of any options you choose to select for your system. Then, select Install.

Collecting System Specifications in Windows-speccy2.png

4. Press the **Run Speccy** button at the end of installation.

Collecting System Specifications in Windows-speccy3.png

5. After analyzing your system, Speccy will generate a hardware configuration report within the application.

Collecting System Specifications in Windows-speccy4.png

6. To share the report, select **File** then press **Publish Snapshot**. When prompted to create a URL, select **Yes**.

Collecting System Specifications in Windows-speccy5.png

OPTION FOUR

Using the Device Management Tool

information found or type information

To communicate to Windows, devices use a device driver. To learn more about what a Windows driver is, visit this page here.

Since a driver is needed for ideal operation of computer hardware, you can detect and see what is currently communicating with the system through this driver.

warning found Warning known

If your system is using generic Windows drivers for your computer hardware, the readings from this option may not be accurate. Make sure that all drivers for the system are fully updated before checking them.

1. **Right click** the **Windows Start Menu** icon and select **Device Manager**.

Collecting System Specifications in Windows-devicemanager1.png

information found or type information

Each device connected to the system is categorized by type. You can expand each type by pressing the gray right arrow next to each category.

Collecting System Specifications in Windows-devicemanager2.png

2. To view hardware, expand the category and **right click** on the device. Select to view its **Properties**.

Collecting System Specifications in Windows-devicemanager4.png

3. In the tab menu at the top, choose **Details** and change the **Property** to **Hardware Ids**. The information here will be the hardware ID that is being sent from the device.

Collecting System Specifications in Windows-devicemanager3.png

How to Unpair a Bluetooth Device on Windows 10 PC

Bluetooth is a short range wireless technology which enables wireless data transmission between two Bluetooth-enabled devices located nearby each other.

If one Bluetooth-enabled (turned on) device is in discovery mode and discovers another Bluetooth-enabled device nearby, it can query for its services and choose to establish a Bluetooth link, or a 'pairing relationship', with the other Bluetooth-enabled device. Establishing a Bluetooth link with another Bluetooth-enabled device is also known as pairing.

Wireless devices with Bluetooth radios must be paired with each other before they can communicate.

Once the two devices have been paired, they will automatically connect to each other when they are within range and have Bluetooth turned on.

This tutorial will show you how to remove a paired **Bluetooth** device on your **Windows 10** PC.

Here's How:

- 1.** Open **Settings**, and click/tap on the **Devices** icon.
- 2.** Click/tap on **Bluetooth & other devices** on the left side, and click/tap on the **paired Bluetooth device** (ex" "SBrink-Phone") you want to remove on the right side. (see screenshot below)

Unpair Bluetooth Device on Windows 10 PC-unpair_bluetooth_device_on_w10_pc-1.jpg

- 3.** Click/tap on the **Remove device** button. (see screenshot below)

Unpair Bluetooth Device on Windows 10 PC-unpair_bluetooth_device_on_w10_pc-2.jpg

4. Click/tap on **Yes** to confirm. (see screenshot below)

Unpair Bluetooth Device on Windows 10 PC-unpair_bluetooth_device_on_w10_pc-3.jpg

That's it,

How to Restart Video Graphics Driver of Display Adapter in Windows 8 and Windows 10

Windows 8 and Windows 10 includes an easy method to restart your graphics drivers on demand as needed. This includes restarting NVIDIA, AMD, and Intel graphics drivers.

If you are having an issue with your video drivers, you could try restarting them to see if that may solve the issue without needing to **restart the computer**.

This tutorial will show you how to restart the video graphics drivers of your display adapter(s) in **Windows 8** and **Windows 10**.

Here's How:

1 Press the **Win + Ctrl + Shift + B** keys.

2 Your screen will now go blank for a second and you will hear a beep.

3 Everything will now automatically reappear as it was before pressing the keys. Anything open and running will still be.

Change Default Sound Input Device from Settings

This option is only available starting with **Windows 10 build 17035**.

1 Open **Settings**, and click/tap on the **System** icon.

2 Click/tap on **Sound** on the left side, and **Choose your input device** you want from the drop menu on the right side. (see screenshot below)

You will not be able to choose if you do not have more than one input device connected.

3 When finished, you can close Settings if you like.

Change Default Sound Input Device in Windows 10-sound_input_settings.jpg

OPTION TWO

Change Default Sound Input Device from Sound Control Panel

1 Open the **Control Panel (icons view)**, and click/tap on the **Sound** icon.

If you like, you can open Run (Win+R), copy and paste the command below into Run, and click/tap on **OK** to directly open "Recording" devices in the Sound panel.[/I]

```
rundll32.exe shell32.dll,Control_RunDLL mmsys.cpl,,1
```

2 Click/tap on the **Recording** tab, and perform one of the actions below you want to use to set the default input (recording) device. (see screenshots below)

- Right click or press and hold on the recording device, and click/tap on **Set a Default Device**.
- Select a recording device, and either:
 - Click/tap on **Set Default** to set for both "Default Device" and "Default Communication Device".
 - Click/tap on the drop menu arrow to the right of **Set Default**, and click/tap on **Default Device**.
 - Click/tap on the drop menu arrow to the right of **Set Default**, and click/tap on **Default Communication Device**. This will not be set as the "Default Device"

~~Change Default Sound Input Device in Windows 10-sound_input-1.jpg~~

~~Change Default Sound Input Device in Windows 10-sound_input-2.jpg~~

3 Click/tap on **OK** when finished. (see screenshot below)

~~Change Default Sound Input Device in Windows 10-sound_input-3.jpg~~

That's it,

How to Open Settings in Windows 10

Most of the settings you'll want to change in Windows 10 are in **Settings**. Settings is organized into the separate **System, Devices, Phone, Network & Internet, Personalization, Apps, Accounts, Time & language, Gaming, Ease of Access (Accessibility), Search, Privacy, Update & Security**, and **Mixed Reality** (if available) categories. You can click/tap on a category to view and change more settings for that category.

Starting with **Windows 10 build 18350**, Microsoft is introducing a new way to help users finish their Windows setup and quickly access some of the most frequently used settings. Inspired by the Microsoft account homepage, the Settings home page now has a header at the top allowing you to take quick action for things like signing in and managing your Microsoft account, making the Windows and Microsoft experience better. It also gives you an easy to glance at system status, such as when updates are available. Some of you may have already seen this in previous builds, but don't worry if not, we're continuing to roll this out slowly and you will see it in an upcoming build.

Starting with **Windows 10 build 21359**, the **Ease of Access** category in Settings has been renamed to **Accessibility**.

This tutorial will show you different ways to open the **Settings** app in **Windows 10**

OPTION ONE

Open Settings with Keyboard Shortcut

1 Press the **Win + I** keys.

OPTION TWO

Open Settings from Win+X Quick Link Menu

1 Open the **Win+X Quick Link menu**, and click/tap on **Settings**. (see screenshot below)

Open Settings in Windows 10-settings_win-x.png

OPTION THREE

Open Settings from Start Menu

1 Open the **Start menu** .

2 Click/tap on the **Settings** (gear) button on the left side of the Start menu. (see screenshot below)

Open Settings in Windows 10-settings_start_menu.jpg

OPTION FOUR

Open Settings from Action Center

1 Open the **Action Center** (Win+A).

2 Click/tap on the **All settings** quick action button. (see screenshot below)

OPTION FIVE

Open Settings from Search

- 1 Open the **Search** (Win+S).
- 2 Type **Settings** into the search box. (see screenshot below)
- 3 Click/tap on **Settings** in the search results, or click/tap on **Open** if Settings is selected.

OPTION SIX

Open Settings from File Explorer

- 1 Open **File Explorer** (Win+E).
- 2 Click/tap on **This PC** in the navigation pane. (see screenshot below)
- 3 Click/tap on the **Computer** tab.
- 4 Click/tap on the **Open Settings** button in the **ribbon**.

OPTION SEVEN

Open Settings from Run

1 Open **Run** (Win+R).

2 Type `ms-settings:` into Run, and click/tap on **OK** or press Enter. (see screenshot below)

Open Settings in Windows 10-settings_run.png

OPTION EIGHT

Open Settings from Command Prompt

1 Open a **command prompt**.

2 Copy and paste `start ms-settings:` into the command prompt, and press Enter. (see screenshot below)

Open Settings in Windows 10-settings_command.png

OPTION NINE

Open Settings from PowerShell

1 Open **PowerShell**.

2 Copy and paste `start ms-settings:` into PowerShell, and press Enter. (see screenshot below)

Open Settings in Windows 10-settings_powershell.png

That's it,

How to Restart the Computer in Windows 10

Restart will close all apps, sign out all users, and full shutdown and restart (reboot) the PC.

This tutorial will show you different ways on how to **restart** your local **Windows 10** PC.

OPTION ONE

To Restart Computer from Start Menu

1 Open the Start menu , click/tap on the **Restart Computer in Windows 10-power.jpg** **Power** button, and click/tap on **Restart**. (see screenshots below)

Restart Computer in Windows 10-start_menu.jpg

Restart Computer in Windows 10-full-screen_start_menu.jpg

OPTION TWO

To Restart Computer from Win+X Quick Link Menu

1 Open the **Win+X Quick Link menu**, click/tap on **Shut down or sign out**, and click/tap on **Restart**. (see screenshot below)

OR

2 Press the Win + X keys, press U, and press R.

Restart Computer in Windows 10-win-x.png

OPTION THREE

To Restart Computer from Alt+F4 Shut Down Windows Dialog

1 Click/tap on your desktop to make it the current focused (active) window, and press the Alt + F4 keys.

2 Select **Restart** in the drop down menu, and click/tap on **OK** or press **Enter**. (see screenshots below)

Restart Computer in Windows 10-alt-f4.png

OPTION FOUR

To Restart Computer from Ctrl+Alt+Del Screen

1 Press the Ctrl + Alt + Del keys, click/tap on the

Restart Computer in Windows 10-power.jpg

(see screenshot below)

Power button, and click/tap on **Restart**.

Restart Computer in Windows 10-ctrl-alt-del_power.jpg

OPTION FIVE

To Restart Computer from Sign-in Screen

2 While on the sign-in screen, click/tap on the **Restart Computer** in Windows 10-power.jpg (see screenshot below)

Power button, and click/tap on **Restart**.

Restart Computer in Windows 10-sign-in_screen.jpg

OPTION SIX

To Restart Computer from Command Prompt

If you like, you can also run the commands below in the **Run** (Win+R) command dialog box.

1 Open a **command prompt**, type the command below you want to use, and press Enter.

```
shutdown /r
```

Performs a full shutdown and restart the computer.

OR

```
shutdown /r /f /t 0
```

Immediately force running applications to close, and then performs a full shutdown and restart the computer.

OR

```
shutdown /r /t xxx
```

Performs a full shutdown and restart the computer after a timeout period you specified in seconds.

Substitute **xxx** in the command above with between **0-315360000** seconds you want for the timeout period. If the timeout period is greater than **0**, the **/f** (force) parameter is implied.

OR

```
shutdown /r /c "Your comment here"
```

Displays a warning with your comment, and performs a full shutdown and restart the computer.

Substitute **Your comment here** in the command above with the comment you want up to 512 characters.

Restart Computer in Windows 10-comment.png

OR

```
shutdown /r /t xxx /c "Your comment here"
```

Displays a warning notice with your comment, and performs a full shutdown and restart the computer after a timeout period you specified in seconds.

Substitute **Your comment here** in the command above with the comment you want up to 512 characters.

Substitute **xxx** in the command above with between **0-315360000** seconds you want for the timeout period. If the timeout period is greater than **0**, the **/f** (force) parameter is implied.

Restart Computer in Windows 10-comment.png

OR

```
shutdown /g
```

Performs a full shutdown and restart the computer. Will restart any applications that were open when you restarted after the system is rebooted and you sign in.

OR

```
shutdown /g /c "Your comment here"
```

Displays a warning with your comment, and performs a full shutdown and restart the computer. Will restart any applications that were open when you restarted after the system is rebooted and you sign in.

Substitute **Your comment here** in the command above with the comment you want up to 512 characters.

Restart Computer in Windows 10-comment.png

OR

```
shutdown /g /t xxx /c "Your comment here"
```

Displays a warning notice with your comment, and performs a full shutdown and restart the computer after a timeout period you specified in seconds. Will restart any applications that were open when you restarted after the system is rebooted and you sign in.

Substitute **Your comment here** in the command above with the comment you want up to 512 characters.

Substitute **xxx** in the command above with between **0-315360000** seconds you want for the timeout period. If the timeout period is greater than **0**, the **/f** (force) parameter is implied.

Restart Computer in Windows 10-comment.png

OPTION SEVEN

To Restart Computer from PowerShell

To see all **Restart-Computer** options in Windows PowerShell 5.0, see: **Restart-Computer**

1 Open **Windows PowerShell**, type the command below you want to use, and press Enter.

```
restart-computer
```

Performs a full shutdown and restart the computer.

OR

```
restart-computer -force
```

Forces running applications to close, and then performs a full shutdown and restart the computer.

OR

```
restart-computer -confirm
```

Prompts you to confirm before performing a full shutdown and restart the computer.

Restart Computer in Windows 10-powershell_confirm.png

OR

```
restart-computer -force -confirm
```

Prompts you to confirm before forces running applications to close, and then performs a full shutdown and restart the computer.

Restart Computer in Windows 10-powershell_confirm.png

OPTION EIGHT

To Perform an Emergency Restart in Windows 10

In some situations you may have to shut down and restart Windows very quickly. This would be an emergency restart. An emergency restart is basically just a forced restart without a timeout. (ex:

```
shutdown.exe -R -T 00 -F )
```

An emergency restart can be helpful in circumstances when you cannot normally restart your computer, and is much better than turning off the power to your computer by performing a hard restart (reboot) which can be harmful to the computer.

1 Press the Ctrl + Alt + Delete keys.

2 Press and hold the Ctrl key, click/tap on the **Power** button, and release the Ctrl key. (see screenshot below)

Restart Computer in Windows 10-emergency_restart-1.png

3 Click/tap on **OK** to restart the computer. (see screenshot below)

Restart Computer in Windows 10-emergency_restart-2.png

OPTION NINE

To Restart Computer using Cortana Voice Command

Starting with **Windows 10 build 16251**, you can now use a **Hey Cortana** voice command to restart the computer.

In addition, you can also ask Cortana to execute this command on the Lock screen, but first you should **enable Cortana on the Lock screen** if you have not done so already.

1 Using **Hey Cortana**, use the voice command below.

"Hey Cortana, restart my computer."

2 Cortana may ask you for a verbal confirmation. You'll have to respond to Cortana with a **"Yes"** for Cortana to complete the voice command.

That's it,

How to Open Win+X Quick Link Menu in Windows 10

How to Open Win+X Quick Link Menu in Windows 10

The Win+X Quick Link menu is a pop-up menu from the Start button that includes shortcuts of common management, configuration, and other power user Windows tools.

Starting with **Windows 10 build 15014**, the Win+X flyout has been updated to say “Apps and Features” instead of “Programs and Features”.

This tutorial will show different ways on how to open the **Win+X Quick Link menu** in **Windows 10**.

EXAMPLE: Win+X Quick Link menu

Open Win+X Quick Link Menu in Windows 10-win-x_shortcuts.png

Here's How:

1 Do **step 2**, **step 3**, or **step 4** below for how you would like to open the Win+X Quick Link menu.

2 Press the Win + X keys and release.

Using this option will allow you to see the available underlined (letter) keyboard shortcuts to press for each menu item to open with.

3 Right click on the **Start** button on the taskbar.

Open Win+X Quick Link Menu in Windows 10-start_button.jpg

4 On a **touchscreen**, press and hold the **Start** button on the taskbar until you see the faded white rectangle appear on it, then release.

Open Win+X Quick Link Menu in Windows 10-win-x_touchscreen.png

That's it,

How to Open Windows PowerShell in Windows 10

Windows 10 comes with Windows PowerShell 5.0 included.

Windows PowerShell is a task-based command-line shell and scripting language designed especially for system administration. Built on the .NET Framework, Windows PowerShell helps IT professionals and power users control and automate the administration of the Windows operating system and applications that run on Windows.

OPTION ONE

Open Windows PowerShell from All apps in Start Menu

1 Open **All apps** in the Start menu.

2 Scroll down and expand open the **Windows PowerShell** folder, and click/tap on **Windows PowerShell**. (see screenshot below)

Open Windows PowerShell in Windows 10-all_apps_powershell.jpg

OPTION TWO

Open Windows PowerShell in Search

1 Press the [key]Win[key] + S keys to open Search.

2 Type **powershell** into the search box, and click/tap on **Windows PowerShell** in the search results at the top. (see screenshot below)

Open Windows PowerShell in Windows 10-search_powershell.png

OPTION THREE

Open Windows PowerShell from Run

1 Press the Win + R keys to open Run.

2 Type **powershell**, and click/tap on **OK** in the search results at the top. (see screenshot below)

Open Windows PowerShell in Windows 10-run_powershell.png

OPTION FOUR

Open Windows PowerShell from Task Manager

1 Open **Task Manager** (Ctrl+Shift+Esc).

2 Click/tap on **File** (menu bar), and click/tap on **Run new task**. (see screenshot below)

Open Windows PowerShell in Windows 10-task-manager_powershell-1.jpg

3 Type **powershell**, and click/tap on **OK** in the search results at the top. (see screenshot below)

OPTION FIVE

Open Windows PowerShell from Win+X Menu

1 If you have the Win+X menu set to **show Windows PowerShell instead of Command Prompt**, then press the Win + X keys to open the Win+X menu.

2 Click/tap on **Windows PowerShell**. (see screenshot below)

OPTION SIX

To "Open Windows PowerShell Here" in File Explorer

1 Open File Explorer (Win+E).

2 Select or open a folder or drive that you want to open Windows PowerShell at that location. (see screenshot below)

3 Click/tap on the **File** tab on the ribbon, click/tap on **Open Windows PowerShell** to expand, and click/tap on **Open Windows PowerShell**. (see screenshot below)

OPTION SEVEN

Open Windows PowerShell from File Explorer

1 While you have a folder or drive open in File Explorer (Win+E), type **PowerShell** into the address bar, and press Enter to open PowerShell in whatever folder or drive you have open.

OR

2 Open File Explorer (Win+E), browse to the folder location below, and click/tap on the **powershell.exe** file to run it. (see screenshot below)

C:\Windows\System32\WindowsPowerShell\v1.0

Open Windows PowerShell in Windows 10-file_explorer_powershell.png

That's it,

How to Open a Command Prompt in Windows 10

A **command prompt** is an entry point for typing computer commands in the Command Prompt window. By typing commands at the command prompt, you can perform tasks on your computer without using the Windows graphical interface.

This tutorial will show you different ways to open a **command prompt** in **Windows 10**.

OPTION ONE

Open Command Prompt from Win+X Quick Link Menu

Starting with **Windows 10 build 14971**, Windows PowerShell will show in the Win+X menu by default now instead of Command Prompt.

[Show Command Prompt or Windows PowerShell on Win+X menu in Windows 10 - Windows 10 Customization Tutorials](#)

1 Open the **Win+X menu**, and click/tap on Command Prompt. (see screenshot below)

Open Command Prompt in Windows 10-win-x_command_prompt.png

OPTION TWO

Open Command Prompt from Task Manager

1 Open **Task Manager** with more details.

2 Click/tap on **File** (menu bar), and click/tap on **Run new task**. (see screenshot below)

Open Command Prompt in Windows 10-task_manager_command_prompt-1.png

3 Type `cmd` or `cmd.exe`, and click/tap on **OK**. (see screenshot below)

Open Command Prompt in Windows 10-task_manager_command_prompt-2.png

OPTION THREE

Open Command Prompt in Search

1 Press the Win + S keys to open Search.

2 Type `cmd` into the search box. (see screenshot below)

3 When **Command Prompt** shows up in the search results, click/tap on it.

Open Command Prompt in Windows 10-search_command_prompt.png

OPTION FOUR

Open Command Prompt from All apps in Start Menu

1 Open the Start menu, and click/tap on **All Apps** at the bottom. (see screenshot below)

2 In All Apps, scroll down and expand open the **Windows System** folder, then click/tap on **Command Prompt**.

Open Command Prompt in Windows 10-start_menu_all_apps_command_prompt.png

OPTION FIVE

Open Command Prompt from File Explorer

1 While you have a folder or drive open in File Explorer (Win+E), type **cmd** into the address bar, and press **Enter** to open the command prompt in whatever folder or drive you have open.

OR

2 Open File Explorer (Win+E), navigate to the **C:\Windows\System32** folder, and click/tap on the **cmd.exe** file. (see screenshot below)

Open Command Prompt in Windows 10-file_explorer_cmd.png

OPTION SIX

Open Command Prompt from Run

1 Press the Win + R keys to open Run.

2 Type , and click/tap on **OK**. (see screenshot below)

Open Command Prompt in Windows 10-run_cmd.png

To "Open Command Window Here" in File Explorer

This option allows you to open a command prompt that opens to the same location as the selected folder or drive.

Starting with **Windows 10 build 14986**, the **Open command window here** context menu item has been removed by default and replaced with the **Open PowerShell window here** context menu item.

How to Add 'Open command window here' context menu in Windows 10

1 In File Explorer, press and hold the Shift key, right click or press and hold on a **folder** or **drive** that you want to open the command prompt at that location, release the Shift key, and click/tap on **Open command window here**. (see screenshot below)

Open Command Prompt in Windows 10-open_command_window_here_context_menu.jpg

That's it,

How to Add or Remove 'Open PowerShell window here' context menu in Windows 10

Windows 10 comes with Windows PowerShell 5.0 included.

Windows PowerShell is a task-based command-line shell and scripting language designed especially for system administration. Built on the .NET Framework, Windows PowerShell helps IT professionals and power users control and automate the administration of the Windows operating system and applications that run on Windows.

For more details about Windows PowerShell, see:

- [What's New in Windows PowerShell](#)

This tutorial will show you how to add or remove the Open PowerShell window here context menu for all users in Windows 10.

While you must be signed in as an administrator to add or remove the "Open PowerShell window here" context menu, all users can use the context menu.

The "Open PowerShell window here" context menu will be available when you right click or shift + right click on a folder or drive, and when you right click or shift + right click on the background of a folder, drive, library background, or desktop.

Starting with Windows 10 build 14986, the Open command window here context

menu item has been removed by default and replaced with the Open PowerShell window here context menu item.

Here's How:

1 Press the Win+R keys to open Run, type regedit, and press Enter to open Registry Editor.

2 In Registry Editor, navigate to the location below. (see screenshot below)

HKEY_CLASSES_ROOT\Directory\shell\Powershell

Open PowerShell window here context menu - Add in Windows 10-regedit-1.png

3 Change the owner of the Powershell registry key in the left pane to be the Administrators group. (see screenshot below step 2)

4 Set permissions of the Powershell registry key in the left pane to "Allow" the Administrators group "Full control". (see screenshot below step 2)

5 In Registry Editor, navigate to the location below. (see screenshot below step 2)

HKEY_CLASSES_ROOT\Directory\shell\Powershell\command

6 Change the owner of the command registry key in the left pane to be the Administrators group. (see screenshot below step 2)

7 Set permissions of the command registry key in the left pane to "Allow" the Administrators group "Full control". (see screenshot below step 2)

8 In Registry Editor, navigate to the location below. (see screenshot below)

HKEY_CLASSES_ROOT\Directory\Background\shell\Powershell

Open PowerShell window here context menu - Add in Windows 10-regedit-2.png

9 Change the owner of the Powershell registry key in the left pane to be

the Administrators group. (see screenshot below step 8)

10 Set permissions of the Powershell registry key in the left pane to "Allow" the Administrators group "Full control". (see screenshot below step 8)

11 In Registry Editor, navigate to the location below. (see screenshot below step 8)

HKEY_CLASSES_ROOT\Directory\Background\shell\Powershell\command

12 Change the owner of the Powershell registry key in the left pane to be the Administrators group. (see screenshot below step 8)

13 Set permissions of the Powershell registry key in the left pane to "Allow" the Administrators group "Full control". (see screenshot below step 8)

14 In Registry Editor, navigate to the location below. (see screenshot below)

HKEY_CLASSES_ROOT\Drive\shell\Powershell

Open PowerShell window here context menu - Add in Windows 10-regedit_3.png

15 Change the owner of the Powershell registry key in the left pane to be the Administrators group. (see screenshot below step 14)

16 Set permissions of the Powershell registry key in the left pane to "Allow" the Administrators group "Full control". (see screenshot below step 14)

17 In Registry Editor, navigate to the location below. (see screenshot below step 14)

HKEY_CLASSES_ROOT\Drive\shell\Powershell\command

18 Change the owner of the Powershell registry key in the left pane to be the Administrators group. (see screenshot below step 14)

19 Set permissions of the Powershell registry key in the left pane to "Allow" the Administrators group "Full control". (see screenshot below step 14)

20 Do step 21 (add-right click), step 22 (add-Shift+right click) , or step 23 (remove) below for what you would like to do.

21 To Add Right Click "Open PowerShell window here" Context Menu

A) Click/tap on the Download button below to download the file below, and go to **step 24** below.

Add_Open_PowerShell_window_here_context_menu.reg

[Download](#)

22 To Add Shift + Right Click "Open PowerShell window here" Context Menu

A) Click/tap on the Download button below to download the file below, and go to **step 24** below.

Add_Shift+Open_PowerShell_window_here_context_menu.reg

[Download](#)

23 To Remove "Open PowerShell window here" Context Menu

A) Click/tap on the Download button below to download the file below, and go to **step 24** below.

Remove_Open_PowerShell_window_here_context_menu.reg

[Download](#)

24 Save the .reg file to your desktop.

25 Double click/tap on the downloaded .reg file to merge it.

26 When prompted, click/tap on Run, Yes (UAC), Yes, and OK to approve the merge.

27 You can now delete the downloaded .reg file if you like.

How to Open and Use All apps in Windows 10 Start menu

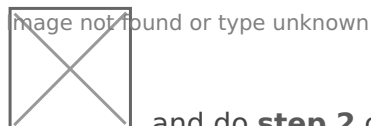
All apps in the Start menu displays an alphabetical list of all your installed Windows apps and desktop apps in Windows 10. Some of these apps are grouped into folders with the folder name in the alphabetical list.

Starting with **Windows 10 Insider Preview Build 14328**, Microsoft has brought back the full-screen All Apps list while using **full screen Start**.

This tutorial will show you how to open and use **All apps** in the Start menu to open apps from in **Windows 10**.

OPTION ONE

Open All Apps in Start Menu



1. Open the **Start menu** , and do **step 2** or **step 3** below depending if you have **full-screen Start** turned on or off.

2. If Full-screen Start is Turned Off

A) All Apps shows by default on the left side of the Start menu. (see screenshot below)

Open and Use All apps in Start menu in Windows 10-windows_10_all_apps.jpg

Open and Use All apps in Start menu in Windows 10-all_apps.png

3. If Full-screen Start is Turned On

A) Click/tap on the **All apps**

Open and Use All apps in Start menu in Windows 10-all_apps.png

button

towards the top left corner on Start. (see screenshot below)

Open and Use All apps in Start menu in Windows 10-all_apps_full_screen_start.jpg

Open and Use All apps in Start menu in Windows 10-all_apps_full_screen_start.jpg

OPTION TWO

View Apps with Scroll Bar in All Apps

1. Open **All apps**, and move the **scroll bar** up and down to view all apps. (see screenshot below)

2. If you like, click/tap on an app to open it.

Open and Use All apps in Start menu in Windows 10-scroll_all_apps.jpg

Open and Use All apps in Start menu in Windows 10-scroll_all_apps.jpg

OPTION THREE

View Apps by Letters in All Apps

1. Open **All apps**.

2. Click/tap on any **character** or **letter** above the listed apps. (see screenshot below)

Open and Use All apps in Start menu in Windows 10-all_apps_open_by_letter-1.jpg

Open and Use All apps in Start menu in Windows 10-all_apps_open_by_letter-1.jpg

3. Click/tap on an available **character** or **letter** to jump to that alphabetical order in All apps. (see screenshot below)

4. If you like, click/tap on an app to open it.

OPTION FOUR

Expand Open Folders in All Apps

A folder in All apps represents a group of shortcuts for a specific installed app or apps included with Windows.

Folder example: Windows Accessories, Windows Administrative Tools, Windows Ease of Access, Windows System

1. Open **All apps**.

2. Click/tap on the folder to toggle to expand or close the folder. (see screenshot below)

3. If you like, click/tap on an app or file in the folder to open it.

OPTION FIVE

Open Context Menu of App in All Apps

1. Open **All apps**.

2. Right click or press and hold on an app (ex: "Microsoft Edge") listed in All apps, and click/tap on the item you want in its context menu. (see screenshot below)

That's it,

How to open a reverse tunnel through a Windows PC to access the LAN

What?

If you are trying to access a device on a NATted network, and cannot VPN in, you can use this to open a tunnel through a managed computer on the network, in order to access anything on that computer's LAN

Requirements

1. You need to have powershell (with admin privileges) access to a computer on the LAN (remote background via Syncro / Ninja / etc)
2. You need to have access to a cloud Linux server, a port will be opened on this cloud server that forwards traffic to a device on the computer's LAN network
3. The computer needs to have a network connection that can reach the cloud server

How To Connect

Video guide here: <https://www.loom.com/share/883ebba6d93146ac82a0fdd45a16aeb1>

This guide assumes you have a Linux server running in the cloud
You also need to have a public SSH key added to the `authorized_keys` file on the server
We have one in the cloud already set up, use these commands to connect to it and open a port redirect

1) Open remote background Powershell on a computer connected to the LAN

2) Install the Openssh client on the computer

```
Get-WindowsCapability -Online | Where-Object Name -like 'OpenSSH*'
```

3) Download the SSH key for the Cloud Linux server, this will let us open a port on that server

```
(New-Object  
System.Net.WebClient).DownloadFile("https://ssh.danbuntu.com/files/ceef6b96aa17610858b9eb11520  
343e5de8fd0a47858dbef28145f5b96e12f9e", "C:\Windows\Temp\id_rsa_remote")
```

4) Open a reverse port forward to a specific device on the computer's LAN network

Make sure to change these variables to match your scenario

```
# remote IP address of the cloud server  
# leave this as is, unless you are using a different server  
$CLOUD_IP = "104.238.138.35"  
  
# user name on the cloud server  
# leave this as is, unless you changed it  
$CLOUD_USER = "remote"  
  
# remote port (on the cloud server) you will connect to  
# this can be anything you want, as long as its not being used  
$CLOUD_PORT = 65001  
  
# local IP of the device you want to reach (on the LAN)  
$LAN_IP = "192.168.1.1"  
  
# local port of the device you want to reach (on the LAN)  
$LAN_PORT = 8080  
  
# open the connection  
# if this works well, you should be able to connect to the CLOUD_IP:CLOUD_PORT, and it will  
# redirect the connection to LAN_IP:LAN_PORT  
# [You] ==> [CLOUD_IP:CLOUD_PORT] ==> [LAN_IP:LAN_PORT]
```

```
ssh -o 'StrictHostKeyChecking no' -i C:\Windows\Temp\id_rsa_remote $CLOUD_USER@$CLOUD_IP -R $CLOUD_PORT`:$LAN_IP`:$LAN_PORT
```

How to set up a Linux Cloud Server

To set up a new cloud server to work with reverse port forwarding, do the following

1) SSH in to the server

2) Edit the file `/etc/ssh/sshd_config` and change the `GatewayPorts` to `yes`

```
sudo nano /etc/ssh/sshd_config
```

3) Restart the ssh server

```
sudo systemctl restart sshd
```

4) Create a SSH key and remote user, and save the public key the `authorized_keys` file for the remote user

```
# create ssh key pair
ssh-keygen -f ./sshkey -P ''

# create a user account for SSHing (username remote)
sudo useradd -m remote
sudo mkdir -p /home/remote/.ssh
sudo chown remote.remote -R /home/remote/.ssh
sudo chmod 700 -R /home/remote.ssh

# add the public key to the authorized_keys file for the remote user
sudo cat ./sshkey.pub > /home/remote/.ssh/authorized_keys
```

5) Download the `./sshkey` SSH key, you will need to save this to a publicly accessible location where the computer on the LAN can download it, it will use this key to authenticate with the remote server to open a reverse SSH tunnel

How to Change Computer Sleep

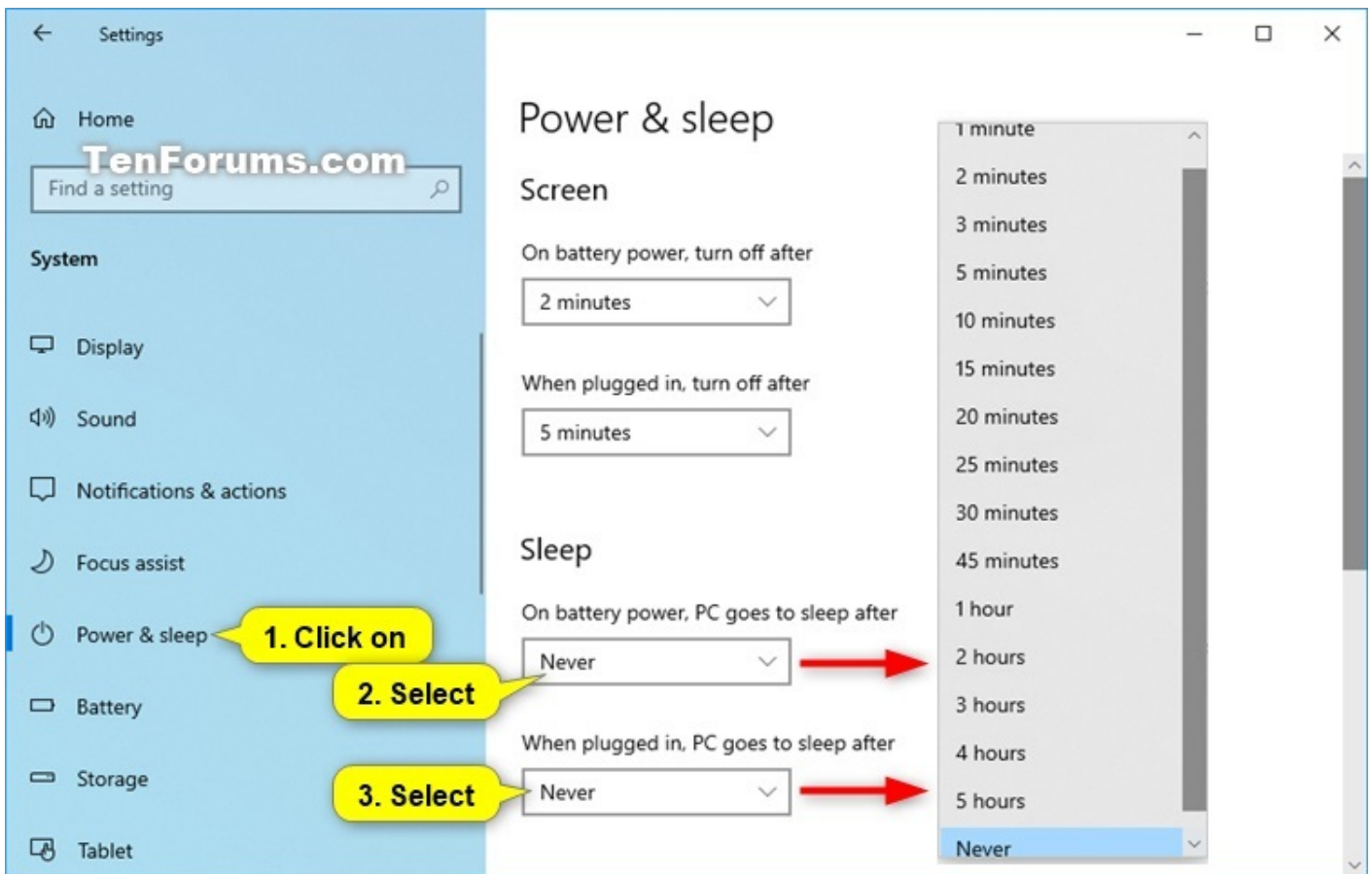
Change Computer Sleep After Time in Settings

This will change the sleep after settings in your currently selected **default power plan**.

1 Open **Settings**, and click/tap on the **System** icon.

2 Click/tap on **Power & sleep** on the left side, and select the **Sleep** time you want in the **On battery power, PC goes to sleep** and **When plugged, PC goes to sleep** drop menus on the right side. (see screenshot below)

If your PC doesn't have battery power, then you will only see one option.



3 When finished, you can close Settings if you like.

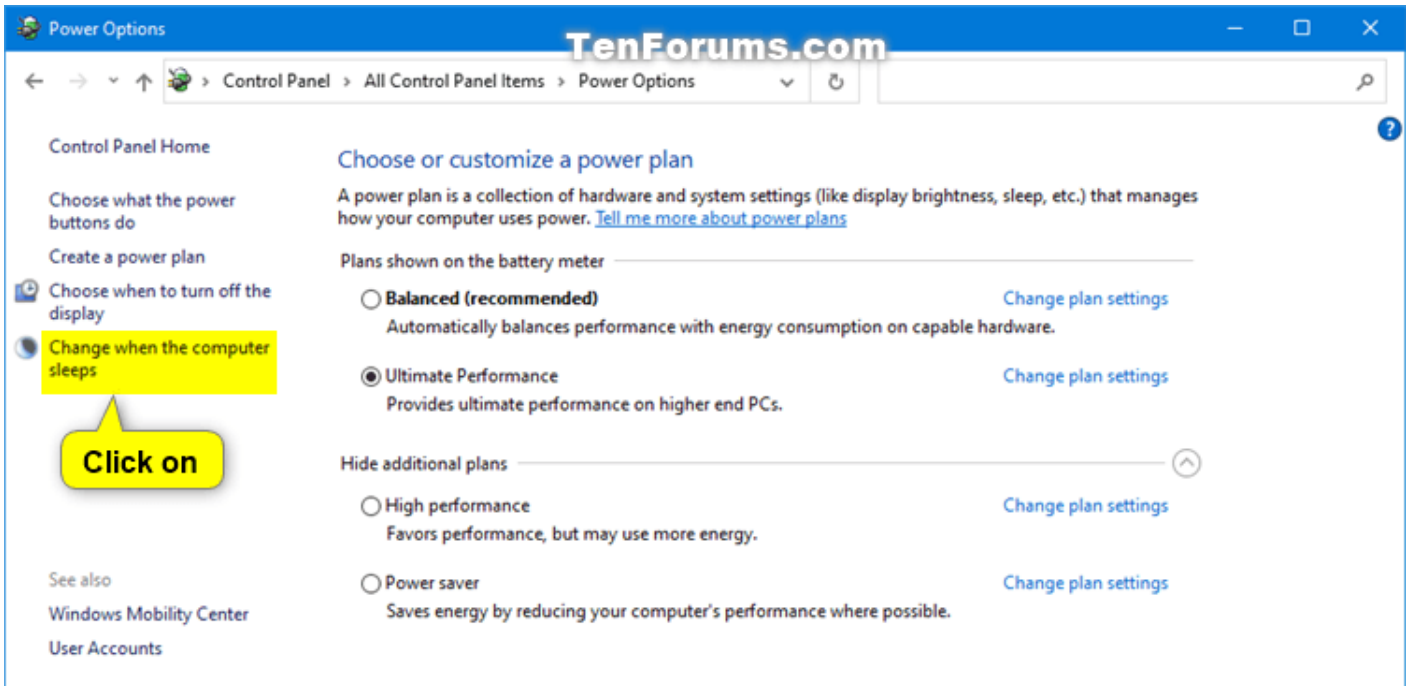
OPTION TWO

Change Computer Sleep After Time in Power Plan Settings

This will change the sleep after settings in your currently selected **default power plan**.

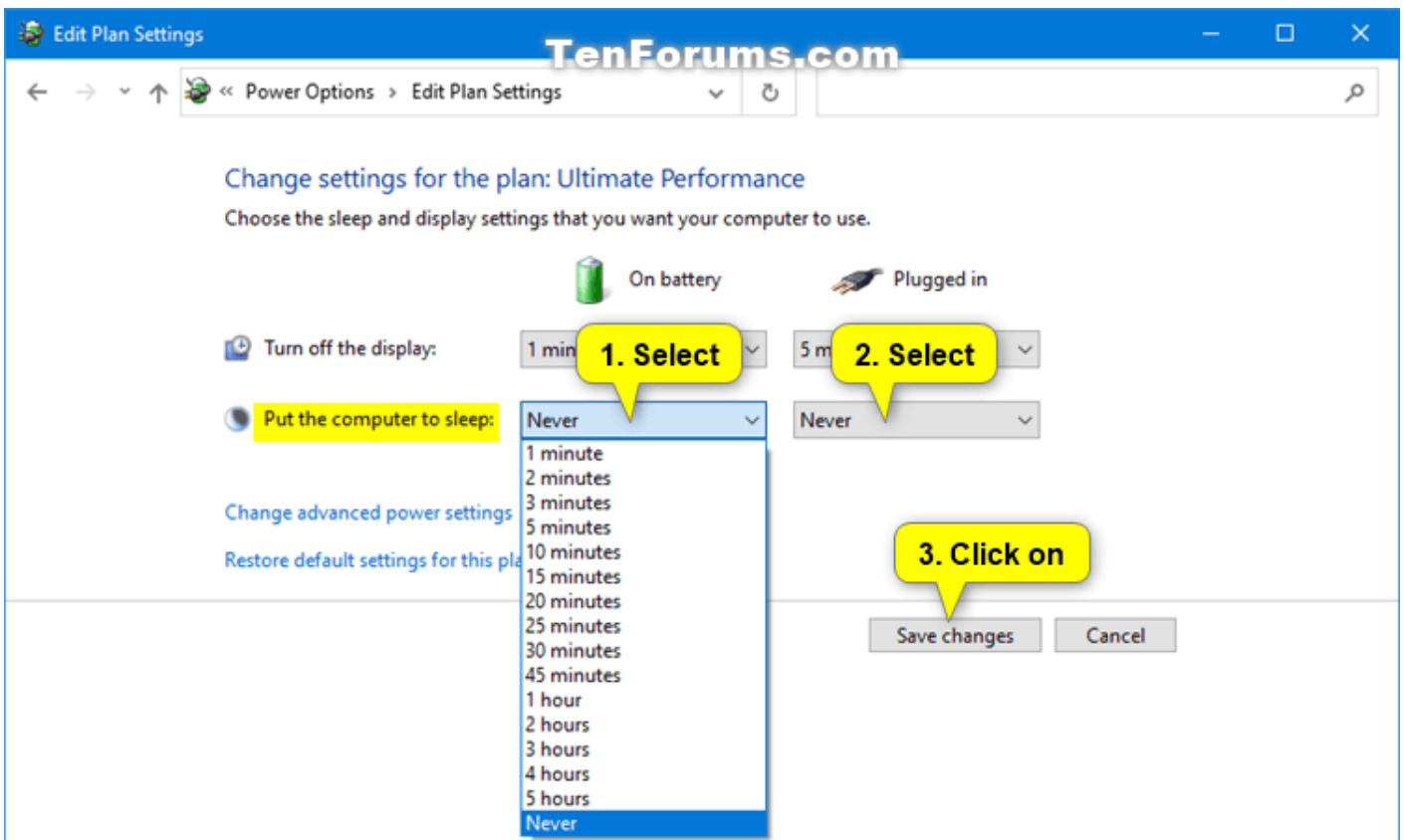
1 Open the **Control Panel (icons view)**, and click/tap on the **Power Options** icon.

2 Click/tap on the **Change when the computer sleeps** link on the left side. (see screenshot below)



3 Select the **Put the computer to sleep** times you want in the **On battery** and **Plugged in** drop menus, and click/tap on **Save changes**. (see screenshot below)

If you PC doesn't have battery power, then you will only see one option.



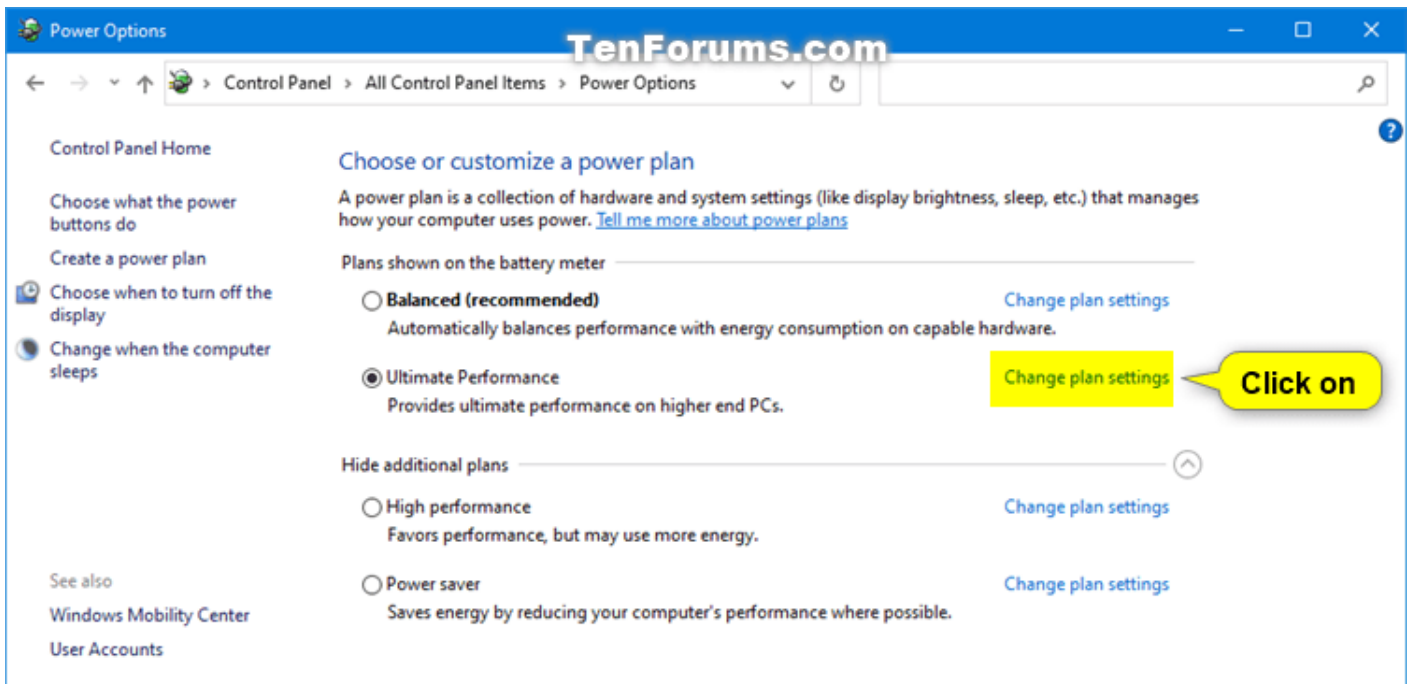
4 You can now close the **Edit Plan Settings** window if you like.

OPTION THREE

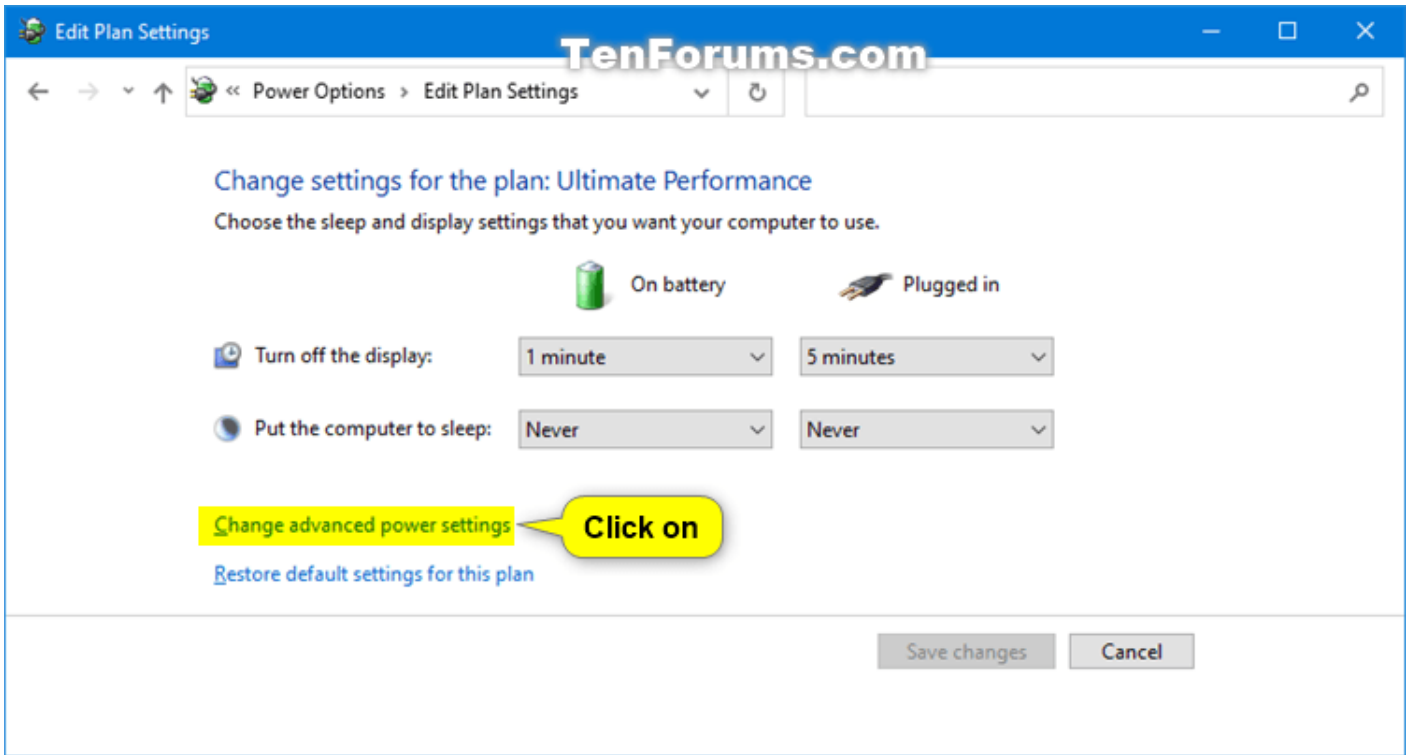
Change Computer Sleep After Time in Advanced Power Plan Settings

1 Open the **Control Panel (icons view)**, and click/tap on the **Power Options** icon.

2 Click/tap on the **Change plan settings** link of the **power plan** (ex: "Ultimate Performance") you want to apply this to. (see screenshot below)

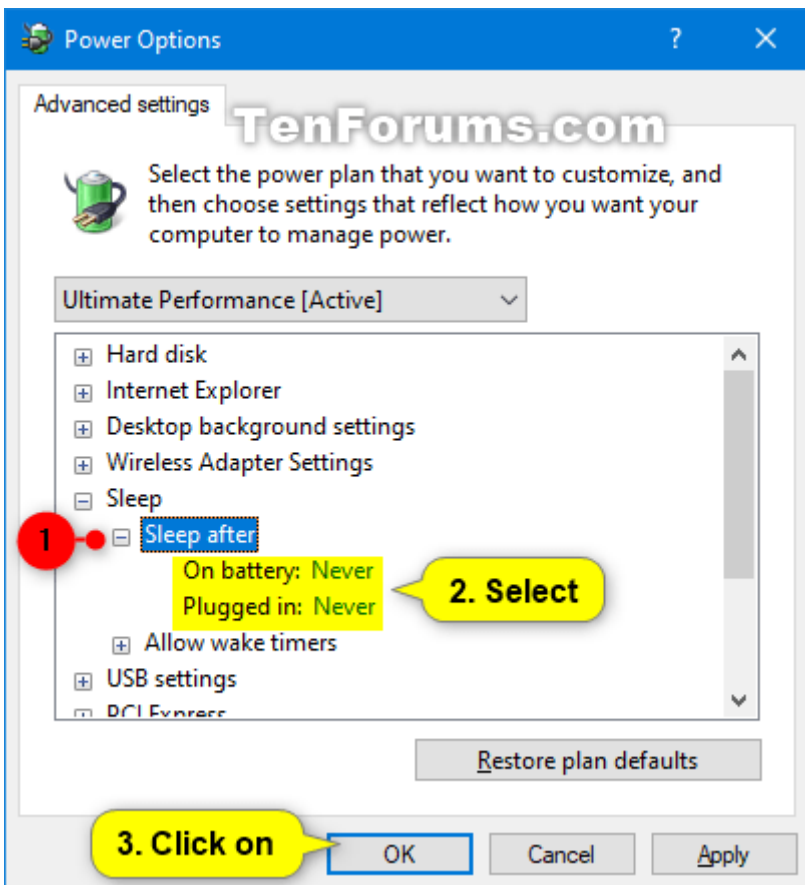


3 Click/tap on the **Change advanced power settings** link. (see screenshot below)



4 Scroll down and expand **Sleep** and **Sleep after**. Select the **On battery** and **Plugged in** times you want, and click/tap on **OK**. (see screenshot below)

If you PC doesn't have battery power, then you will only see one option.



5 You can now close the **Edit Plan Settings** window if you like.

OPTION FOUR

Change Computer Sleep After Time in Command Prompt

This will change the sleep after settings in your currently selected **default power plan**.

1 Open a **command prompt**.

2 Type the command(s) below you want to use into the command prompt, and press `Enter`. (see screenshot below)

(On battery)

```
powercfg -change -standby-timeout-dc <minutes>
```

OR

```
powercfg /SETDCVALUEINDEX SCHEME_CURRENT 238C9FA8-0AAD-41ED-83F4-97BE242C8F20 29f6c1db-86da-48c5-9fdb-f2b67b1f44da <seconds>
```

AND/OR

(Plugged in)

```
powercfg -change -standby-timeout-ac <minutes>
```

OR

```
powercfg /SETACVALUEINDEX SCHEME_CURRENT 238C9FA8-0AAD-41ED-83F4-97BE242C8F20 29f6c1db-86da-48c5-9fdb-f2b67b1f44da <seconds>
```

Substitute **<minutes>** in the commands above with how many minutes you want for how long your computer is inactive before automatically going to sleep.

Substitute **<seconds>** in the commands above with how many seconds you want for how long your computer is inactive before automatically going to sleep.

Using **0** (zero) minutes or seconds will be the same as **Never**.

3 When finished, you can close the command prompt if you like.



```
Command Prompt
Microsoft Windows [Version 10.0.19645.1]
(c) 2020 Microsoft Corporation. All rights reserved.

C:\Users\Brink>powercfg /SETDCVALUEINDEX SCHEME_CURRENT 238C9FA8-0AAD-41ED-83F4-97BE242C8F20 29f6c1db-86da-48c5-9fdb-f2b67b1f44da 60
C:\Users\Brink>powercfg /SETACVALUEINDEX SCHEME_CURRENT 238C9FA8-0AAD-41ED-83F4-97BE242C8F20 29f6c1db-86da-48c5-9fdb-f2b67b1f44da 60
C:\Users\Brink>_
```

Contract Testing

Cyber Y/N	IT STAFF	Did you make contact Y / N	
		Y - Follow-up end of day	
Y			
Y	DA	Yes	connection, en
	DA	Yes	Zurida said:
	EY	Yes	damage, some
	EY	Yes	Ever
	DA	Yes	ing yesterday, l
Y	DA	Yes	No emerge

How to Get the Phone IP

In this guide we will learn how to get the IPv4 of the Phone.

Please Find Your Phone model below.

Phone Model	Instructions for getting the IP Address
Yealink T21P Yealink T46 Yealink T48 Yealink T46 Yealink T48 Yealink T54W	Press OK on the phone. The IP address should be shown on the first line labeled IPv4 .
Yealink CP925 Yealink CP965 Yealink T57W Yealink T58 Yealink VP5	<ol style="list-style-type: none">1. Press the Menu icon, then select Status.2. The IP address should be shown on the first line labeled IPv4.
Yealink W52P Yealink W56P Yealink W60P Yealink W69P Yealink W76P Yealink W79P	<ol style="list-style-type: none">1. Pick up one of the handsets registered to the base station, then press OK.2. Navigate to Status > Base.3. The IP address of the Base will be displayed on the screen.
Yealink T58W Yealink VP59	<ol style="list-style-type: none">1. Press the settings icon, then select Status.2. The IP address should be shown on the first line labeled IPv4.
Yealink CP965 Yealink CP925	<ol style="list-style-type: none">1. Press the settings icon, then select Status.2. The IP address should be shown on the first line labeled IPv4.

Set Up Unifi

Set up Unifi on Linux

If you are using a RockPi as a controller, click [HERE](#)

Otherwise click [HERE](#)

SSH into RockPi and perform some updates.

1. To SSH into the server we will be using Putty. Download and install Putty.
2. Open up putty and type in the IPv4 address of your server and click open.
3. Log into your RockPi with the username `rock` and password `rock`
4. Start with making sure we have the latest updates installed.

Console

```
sudo apt update
```

```
sudo apt upgrade
```

```
sudo apt-get install ca-certificates wget -y
```

5. Give it a few minutes for the updates to install and afterwards run the following command to reboot.

Console

```
reboot
```

Lets Install UniFi SDN Control Panel on Ubuntu 20.04

1. Once the server is rebooted and your reconnected into the server using SSH we will now get started with running the following command.

Console

```
rm unifi-latest.sh &> /dev/null; wget https://get.glennr.nl/unifi/install/install_latest/unifi-l
```

2. You will be prompted to keep the script which here I type in: Y
3. You will be prompted to apply some updates to the system, type in: Y
4. Now just wait while the installation proceeds to install some required software.
5. Next prompt will be to install script to be able to update Unifi Network Controller via APT, type in: Y
6. You should now be complete with the installation.
7. Lets make sure that the Unifi Controller service auto starts with the following command.

Console

```
sudo systemctl enable unifi
```

Installing Fail2ban

Fail2ban will protect your cloud hosted Unifi Controller from brute force attacks. This script will ban people after 4 failed attempts for 10 minutes.

Console

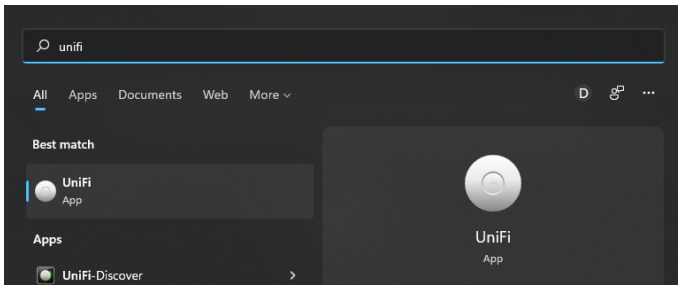
```
rm unifi-fail2ban.sh &> /dev/null; wget https://get.glennr.nl/unifi/extra/unifi-fail2ban.sh && b
```

Set up Unifi on Windows

- 1) Install the Unifi controller for the specific model of Unifi equipment from this link:

<https://www.ui.com/download/unifi/>

- 2) Run the downloaded installer and continue through the setup process
- 3) Run the installed Unifi controller



4) The Unifi controller will start up, once started click **Launch Browser to Manage the Network**



5) You will be taken to a web page where you can configure the Unifi network equipment and the controller

Adding the controller to the UniFi Account

1-Go to the IP of the device on port 8443 EX - `192.168.1.12: 8443`

Make sure you type `https://` before the IP or you will get a Error Message

It will tell you that "Your connection is not Private" Click on **ADVANCED** and then on **Proceed to 192.168.1.170 (unsafe)**

Step 1 of 6

Name Your Controller

Use a simple name to help differentiate your controller when managing multiple networks.

Controller Name

UniFi Network

By selecting this you are agreeing to [end user license agreement](#) and the [terms of service](#).

[Or restore setup from backup](#)

2-Here we will **name our controller**.

Idea Of Naming is **RockPi-x** where **x** is a unique number.

3-Next, login using our `av@gmail.us` UniFi account

Step 2 of 6

Sign in with your Ubiquiti Account

Use your Ubiquiti Account to access your Controller via the [unifi.ui.com](#) service or locally with the same credentials.

Username



Username cannot be empty.

Password

[Switch to Advanced Setup](#)

4-Next, Enable "**Automatically Optimize my network**" and click **NEXT**

Step 3 of 6

UniFi Network Setup

Basic configuration for your network.

Automatically optimize my network

UniFi Network automatically detects and sets the most commonly missed, but vital, settings for improved WiFi and network performance.

Enable Auto Backup

UniFi Network will periodically do backups of your setup.

5-Click **NEXT** Again

6-Under **WIFI Setup** click **Skip**

7-Make sure everything is Correct including Time Zone and click **Finish**

Step 6 of 6

Review Configuration

Check your configuration and setup your Controller.

Controller Name	RockPi-9
Remote Access	Enabled
Use Ubiquiti account for local access	Yes
Ubiquiti Account	av@gmail.us
Country or territory	United States <input type="text"/>
Timezone	(UTC-05:00) America/New York <input type="text"/>

And That's it, you should see it under the UniFi app and use it as a Controller adding devices etc.

Remove / Forgetting a WIFI Profile

- To delete a wireless network profile in Windows 10:
 1. Press the **Windows key** on your keyboard and type "**wifi**"
Image not found or type unknown
 2. Click on **Wi-fi Settings**
 3. Click **Manage Known Networks**
Image not found or type unknown
 4. Click on a Network name and then click **Forget**
Image not found or type unknown