

How to Change Computer Sleep

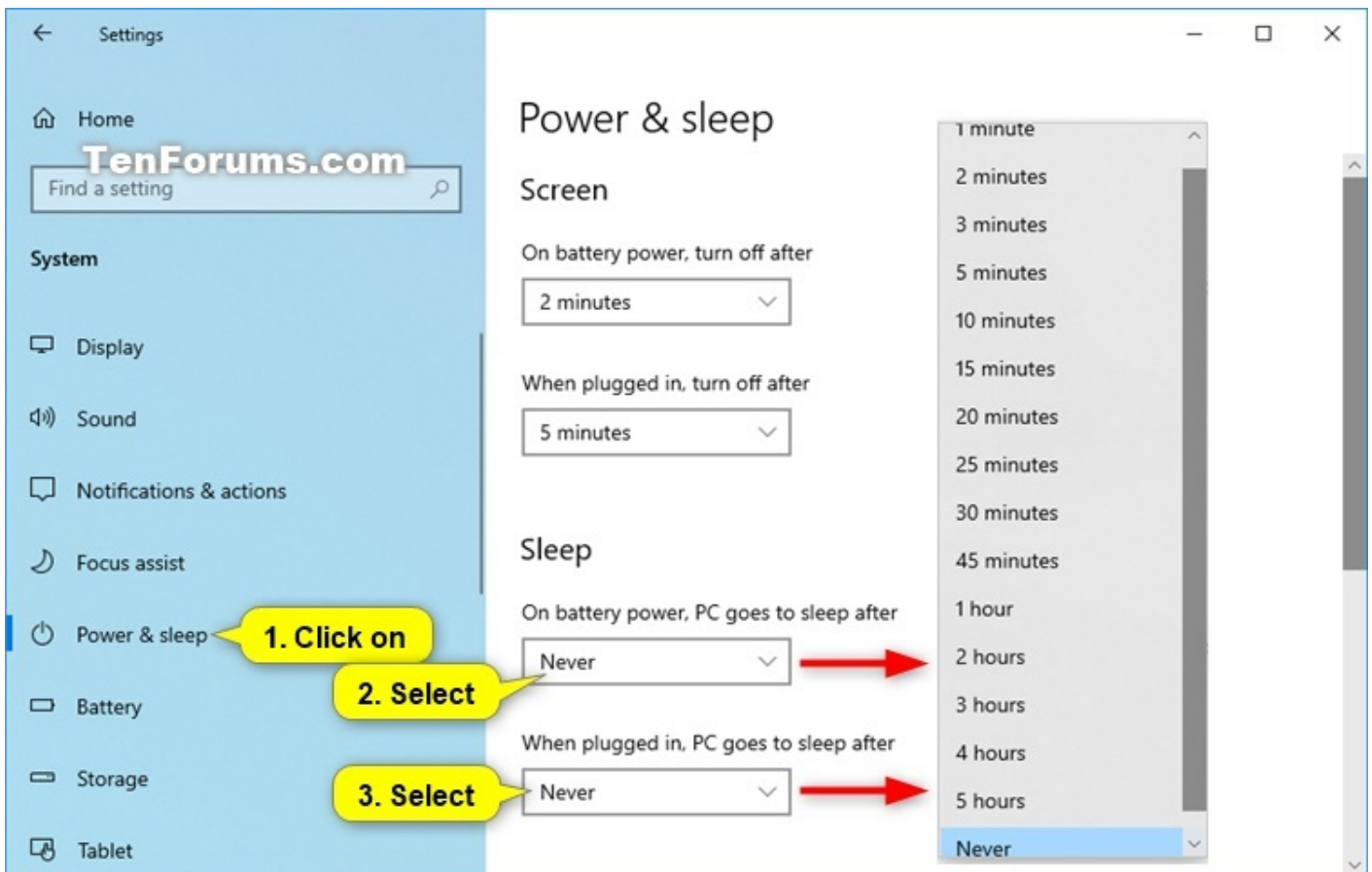
Change Computer Sleep After Time in Settings

This will change the sleep after settings in your currently selected **default power plan**.

1 Open **Settings**, and click/tap on the **System** icon.

2 Click/tap on **Power & sleep** on the left side, and select the **Sleep** time you want in the **On battery power, PC goes to sleep** and **When plugged, PC goes to sleep** drop menus on the right side. (see screenshot below)

If you PC doesn't have battery power, then you will only see one option.



3 When finished, you can close Settings if you like.

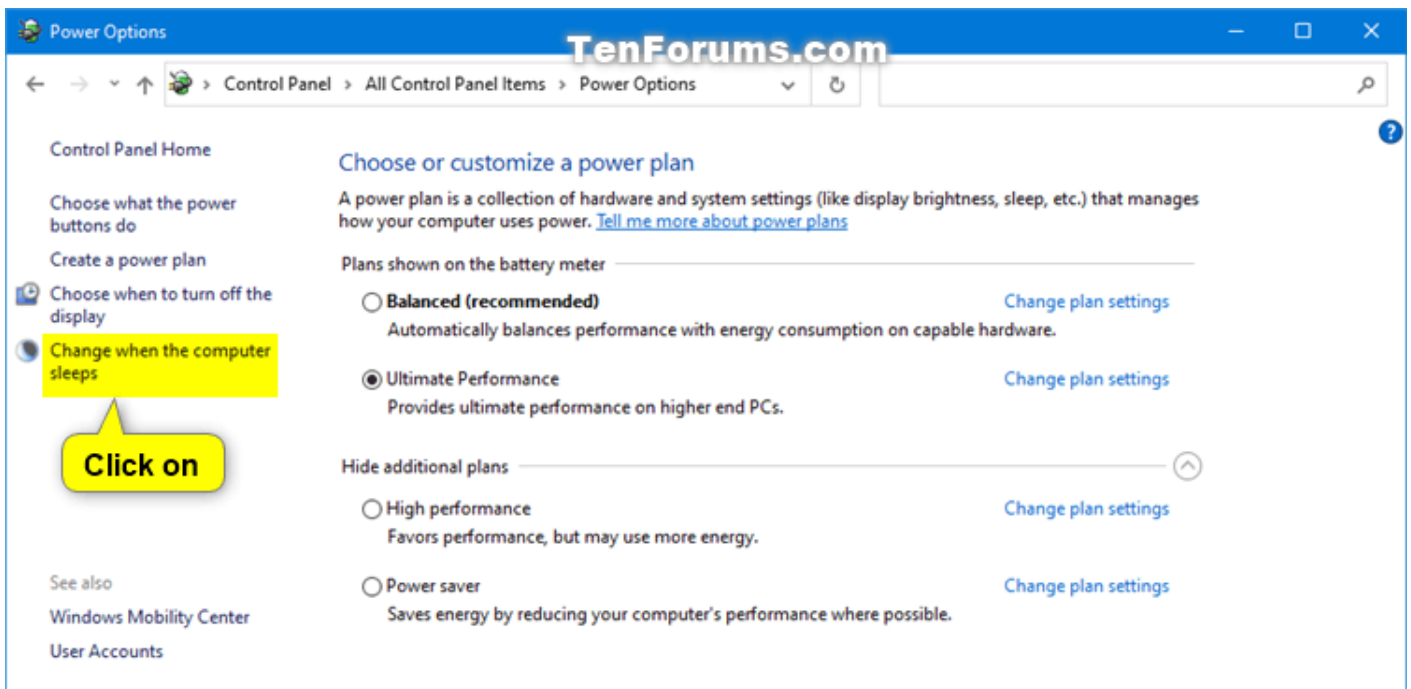
OPTION TWO

Change Computer Sleep After Time in Power Plan Settings

This will change the sleep after settings in your currently selected **default power plan**.

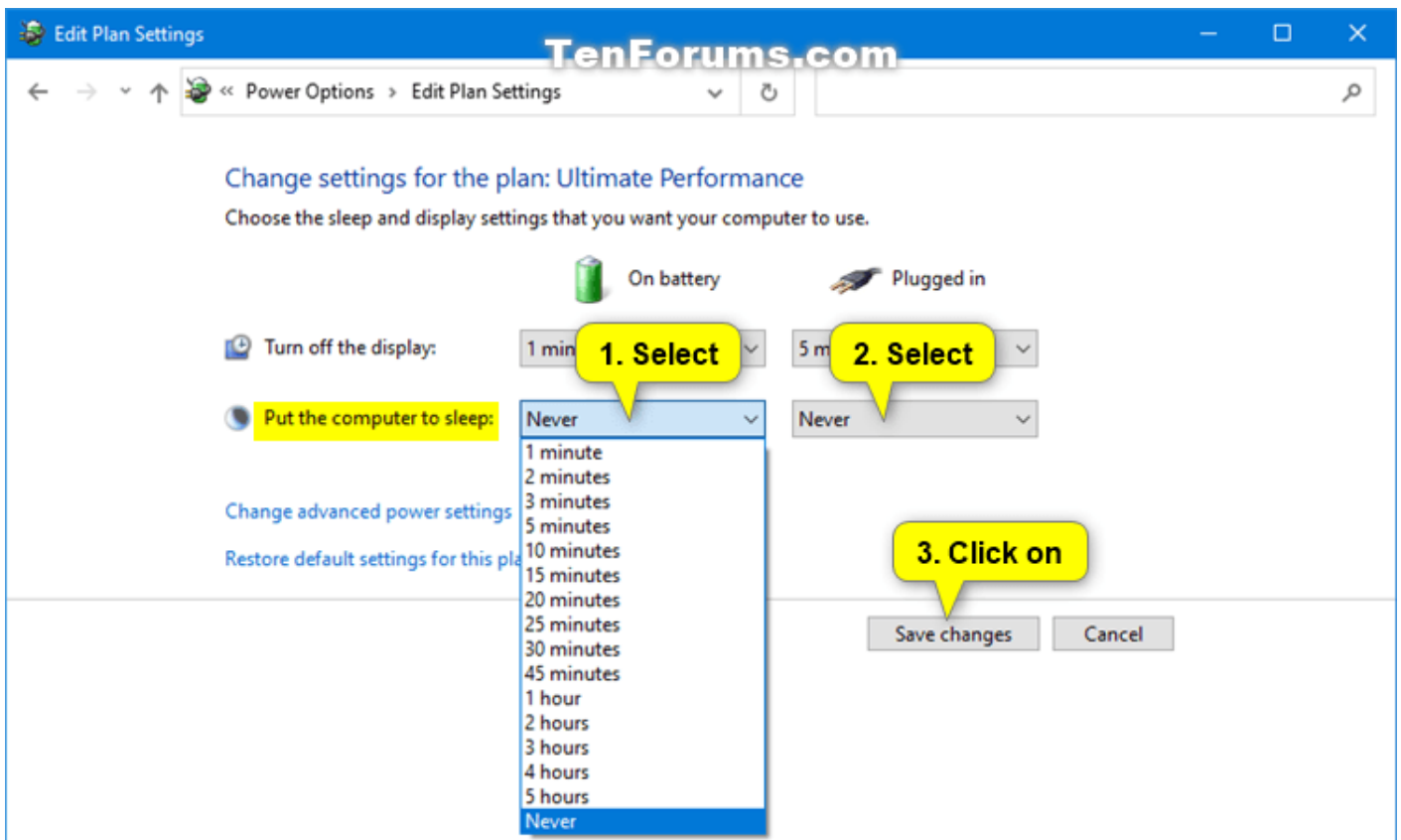
1 Open the **Control Panel (icons view)**, and click/tap on the **Power Options** icon.

2 Click/tap on the **Change when the computer sleeps** link on the left side. (see screenshot below)



3 Select the **Put the computer to sleep** times you want in the **On battery** and **Plugged in** drop menus, and click/tap on **Save changes**. (see screenshot below)

If you PC doesn't have battery power, then you will only see one option.



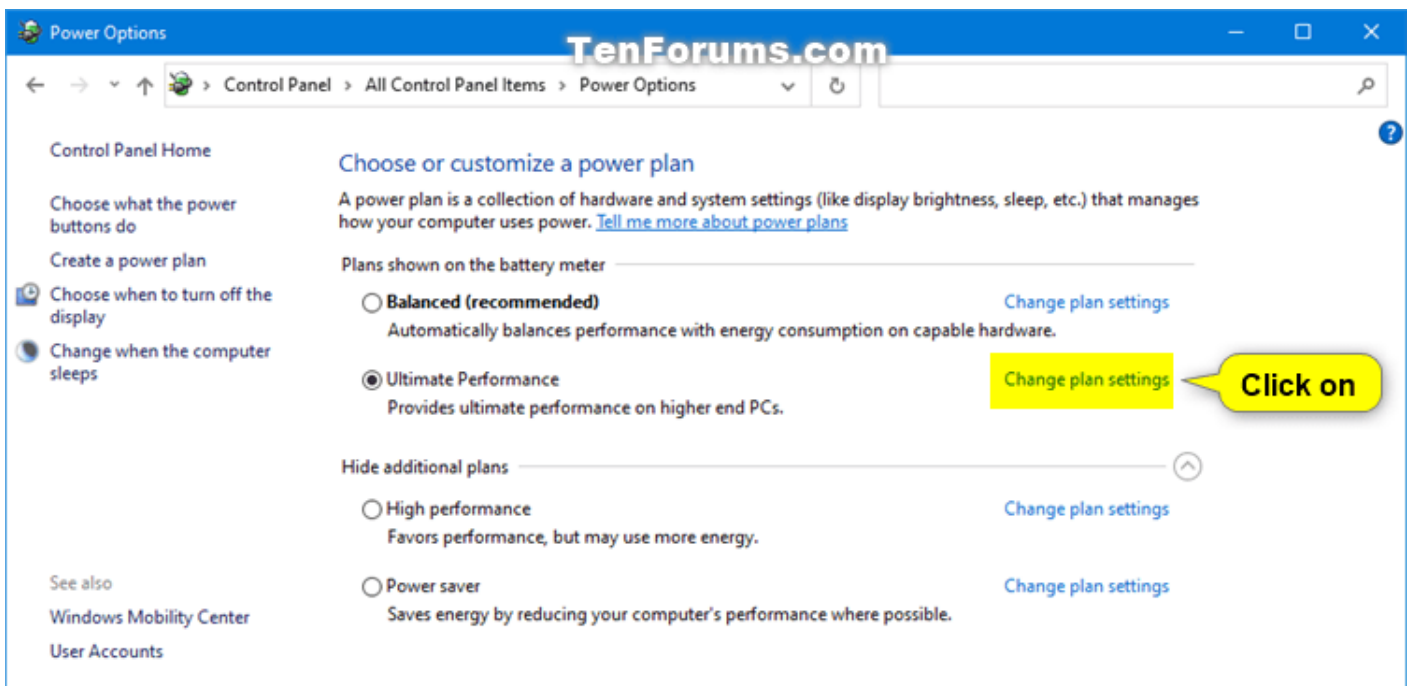
4 You can now close the **Edit Plan Settings** window if you like.

OPTION THREE

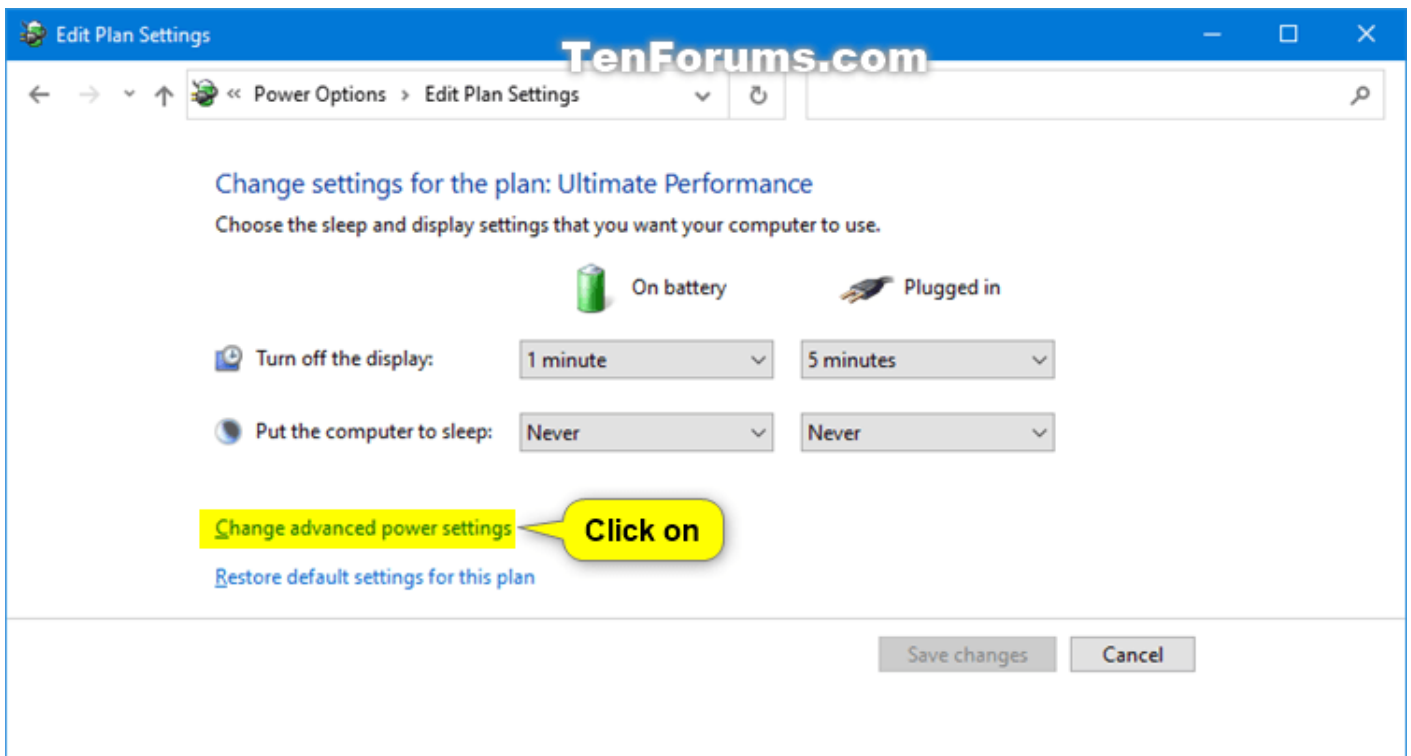
Change Computer Sleep After Time in Advanced Power Plan Settings

1 Open the **Control Panel (icons view)**, and click/tap on the **Power Options** icon.

2 Click/tap on the **Change plan settings** link of the **power plan** (ex: "Ultimate Performance") you want to apply this to. (see screenshot below)

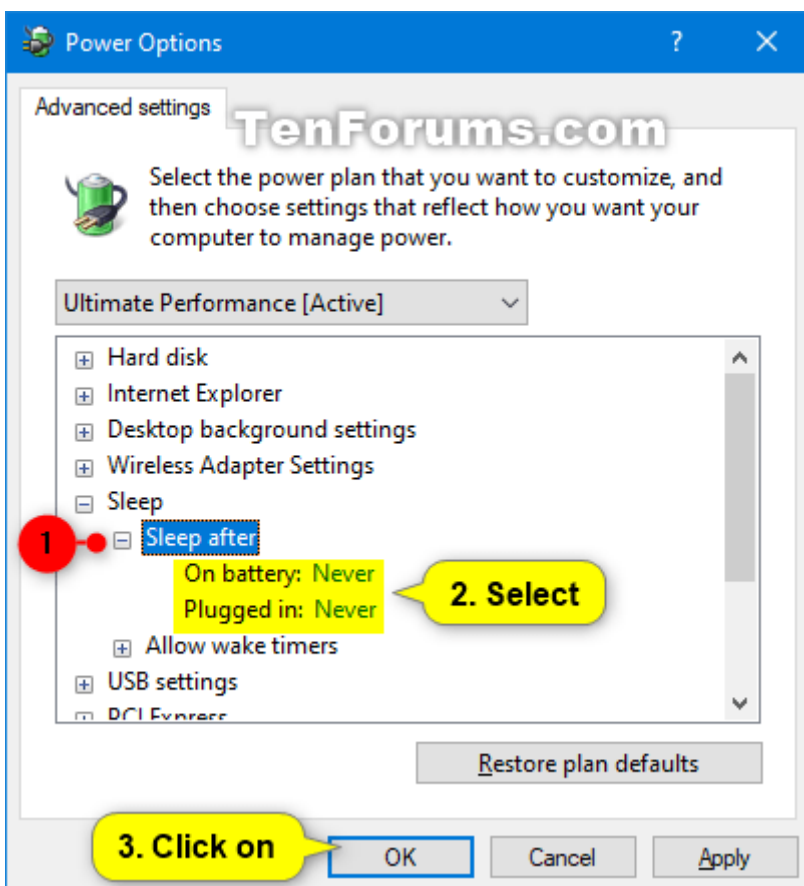


3 Click/tap on the **Change advanced power settings** link. (see screenshot below)



4 Scroll down and expand **Sleep** and **Sleep after**. Select the **On battery** and **Plugged in** times you want, and click/tap on **OK**. (see screenshot below)

If you PC doesn't have battery power, then you will only see one option.



5 You can now close the **Edit Plan Settings** window if you like.

OPTION FOUR

Change Computer Sleep After Time in Command Prompt

This will change the sleep after settings in your currently selected **default power plan**.

1 Open a **command prompt**.

2 Type the command(s) below you want to use into the command prompt, and press `Enter`. (see screenshot below)

(On battery)

```
powercfg -change -standby-timeout-dc <minutes>
```

OR

```
powercfg /SETDCVALUEINDEX SCHEME_CURRENT 238C9FA8-0AAD-41ED-83F4-97BE242C8F20 29f6c1db-86da-48c5-9fdb-f2b67b1f44da <seconds>
```

AND/OR

(Plugged in)

```
powercfg -change -standby-timeout-ac <minutes>
```

OR

```
powercfg /SETACVALUEINDEX SCHEME_CURRENT 238C9FA8-0AAD-41ED-83F4-97BE242C8F20 29f6c1db-86da-48c5-9fdb-f2b67b1f44da <seconds>
```

Substitute **<minutes>** in the commands above with how many minutes you want for how long your computer is inactive before automatically going to sleep.

Substitute **<seconds>** in the commands above with how many seconds you want for how long your computer is inactive before automatically going to sleep.

Using **0** (zero) minutes or seconds will be the same as **Never**.

3 When finished, you can close the command prompt if you like.



The image shows a screenshot of a Windows Command Prompt window. The title bar is blue and says "Command Prompt". The window content is black with white text. At the top, it says "Microsoft Windows [Version 10.0.19645.1]" and "(c) 2020 Microsoft Corporation. All rights reserved." Below that, the command prompt shows the user's location as "C:\Users\Brink>". The user has entered the command "powercfg /SETDCVALUEINDEX SCHEME_CURRENT 238C9FA8-0AAD-41ED-83F4-97BE242C8F20 29f6c1db-86da-48c5-9fdb-f2b67b1f44da 60" and it has been executed. The prompt then shows the command "powercfg /SETACVALUEINDEX SCHEME_CURRENT 238C9FA8-0AAD-41ED-83F4-97BE242C8F20 29f6c1db-86da-48c5-9fdb-f2b67b1f44da 60" and it has been executed. The prompt then shows the user's location as "C:\Users\Brink>". A watermark "TenForums.com" is visible in the top right corner of the command prompt window.

```
Microsoft Windows [Version 10.0.19645.1]
(c) 2020 Microsoft Corporation. All rights reserved.

C:\Users\Brink>powercfg /SETDCVALUEINDEX SCHEME_CURRENT 238C9FA8-0AAD-41ED-83F4-97BE242C8F20 29f6c1db-86da-48c5-9fdb-f2b67b1f44da 60
C:\Users\Brink>powercfg /SETACVALUEINDEX SCHEME_CURRENT 238C9FA8-0AAD-41ED-83F4-97BE242C8F20 29f6c1db-86da-48c5-9fdb-f2b67b1f44da 60
C:\Users\Brink>
```

Revision #1

Created 6 September 2022 20:07:52 by Aniel

Updated 6 September 2022 20:15:51 by Aniel